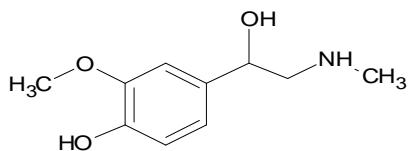


製造：POLLYINTELL社 輸入：プラクティカル(株) <http://www.practical.jp>

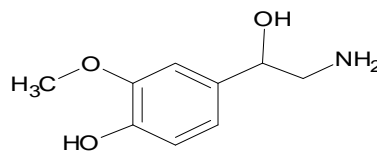
### Extraction of Metanephrines by direct percolation of diluted plasma or serum

AFFINIMIP® SPE Metanephrines are selective solid phase extraction cartridges that selectively clean and concentrate the Metanephrines from complex matrices such as Plasma or Serum.

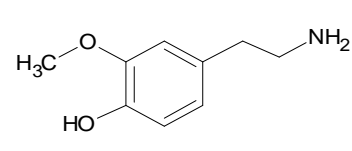
Quantification of plasma free metanephrines (Metanephrine, Normetanephrine and 3-methoxytyramine) is considered to be a highly sensitive test for the diagnosis of pheochromocytoma and the follow-up of patients. Their concentration in this complex matrix is very low and their reliable determination is an analytical challenge.



Metanephrine (MN)



Normetanephrine (NMN)



3-methoxytyramine (3MT)

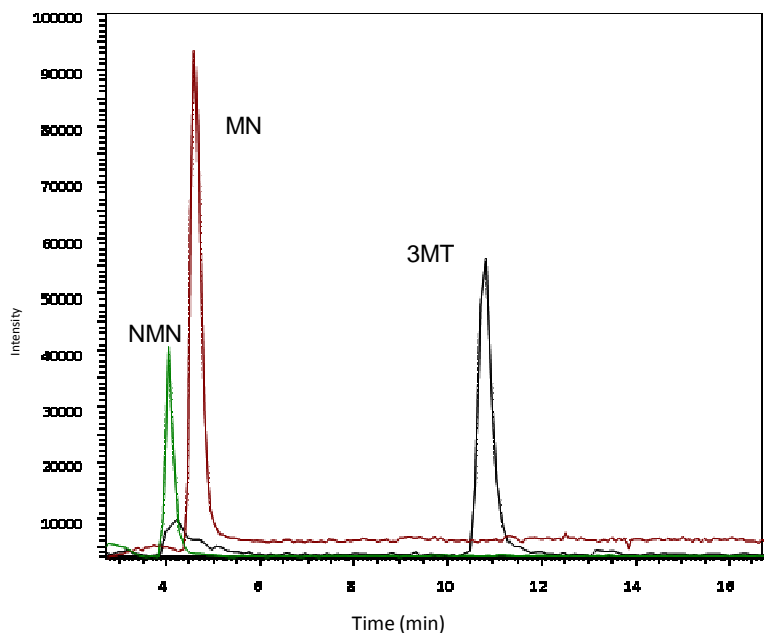
### Purification with AFFINIMIP® SPE Metanephrines

#### Protocol Media

Loading: diluted serum or plasma

Washing: Water – Methanol

Elution: Methanol – Acetic acid



Mass chromatogram (SIM+) of plasma spiked with 60nM of Metanephrines after clean-up with AFFINIMIP®SPE Metanephrines  
 MN: Metanephrine ( $m/z=180$ ); NMN: Normetanephrine ( $m/z=166$ );  
 3MT: 3-Methoxytyramine ( $m/z=151$ ) (Courtesy of B. Claude and P. Morin, ICOA, Orléans, France)

For more technical details : please visit [www.polyintell.com](http://www.polyintell.com) or contact us at [contact@polyintell.com](mailto:contact@polyintell.com)

#### Ordering information:

Catalog number: DG101-02 for 25 columns  
 DG101-03 for 50 columns