

製造 : POLLYINTELL社 輸入 : プラクティカル(株) <http://www.practical.jp>

**AFFINIMIP®SPE PREP GSH ADDUCTS** is a selective extraction cartridge for an easy semi-preparative isolation and purification of GSH conjugates for structural characterization by NMR.

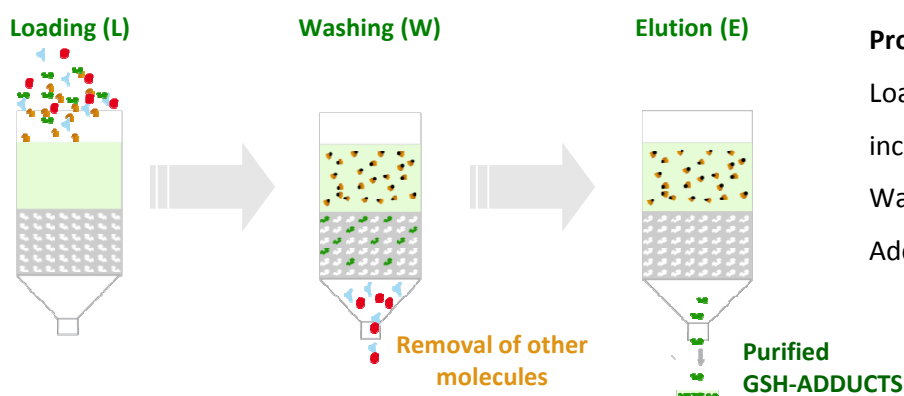
**Principle :** This product is composed by two resins :



- The first resin reacts as a scavenger of GSH by reacting covalently with all free GSH in high excess (its capacity to react with GSH is about 30 to 40  $\mu\text{mol/g}$ )
- The second resin is an imprinted polymer non covalently entrapping all GSH conjugates (its capacity to trap is about 4 to 6  $\mu\text{mol/g}$ ) and separate them from other molecules.



**Application :** from incubation mixture containing an excess of GSH, drug candidate and traces of GSH adduct(s) is loaded on **AFFINIMIP®SPE PREP GSH Adducts**

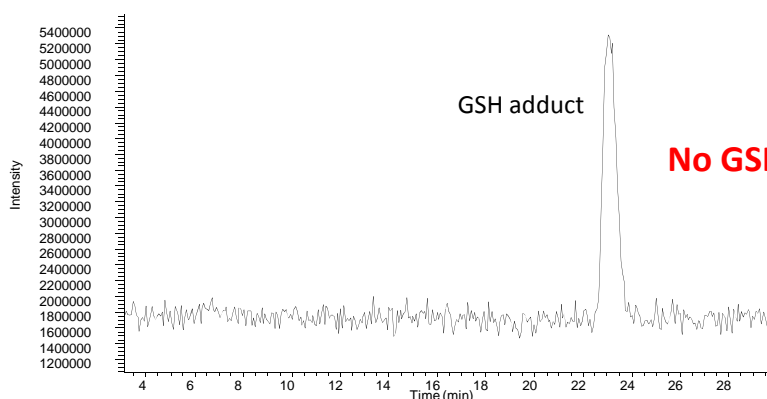


**Protocol Media for purification of GSH adducts**

- Loading: Mixture Acetonitrile – Acetic acid – incubation solution
- Washing: Acetonitrile – Acetic acid – Water
- Adduct elution: Acetonitrile - Water

**Results :** Total-ion-current profile obtained after an extraction on **AFFINIMIP®SPE PREP GSH Adducts 10g**.

Purification of an incubation of 10mL containing 5mM of GSH.



**No GSH and drug candidate observed**

For more technical details : please visit [www.polyintell.com](http://www.polyintell.com) or contact us at [contact@polyintell.com](mailto:contact@polyintell.com)

**Ordering information:**

**Catalog number:**

PH103-01 for 4 columns AFFINIMIP®SPE Prep GSH Adducts (10g)

PH103-02 for 4 columns AFFINIMIP®SPE Prep GSH Adducts (30g)